

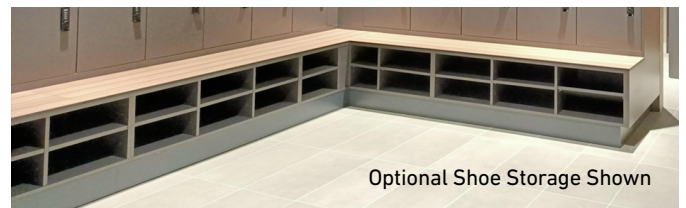
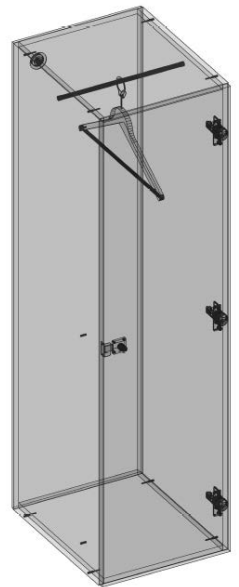
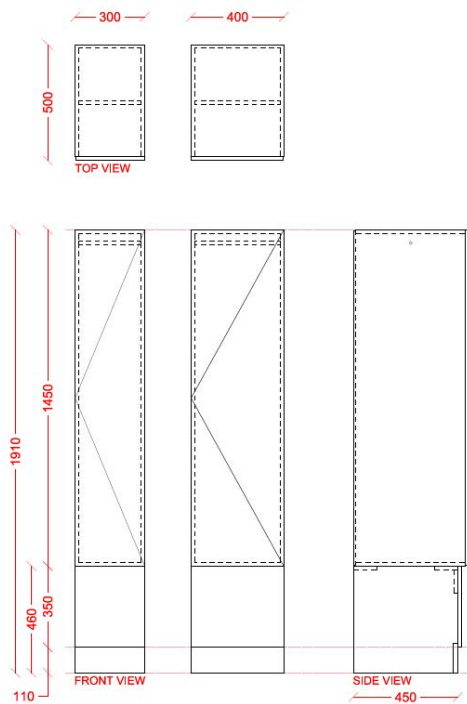


INTERLOC LOCKER TYPE **INTERLOC G1**

**1 DOOR HIGH PLINTH.
SINGLE DOOR LOCKER UNIT.
HANGING AND BAG STORAGE.
DESIGNED TO ALLOW SEATING TO FRONT.**

3 YEAR WARRANTY

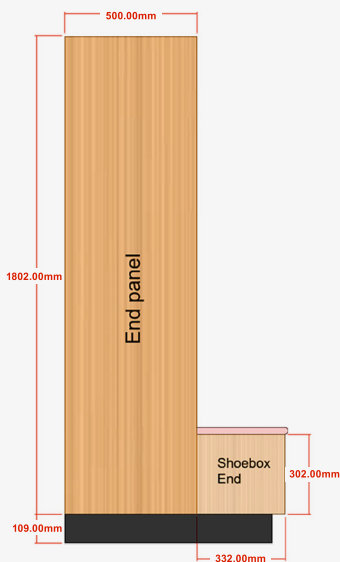
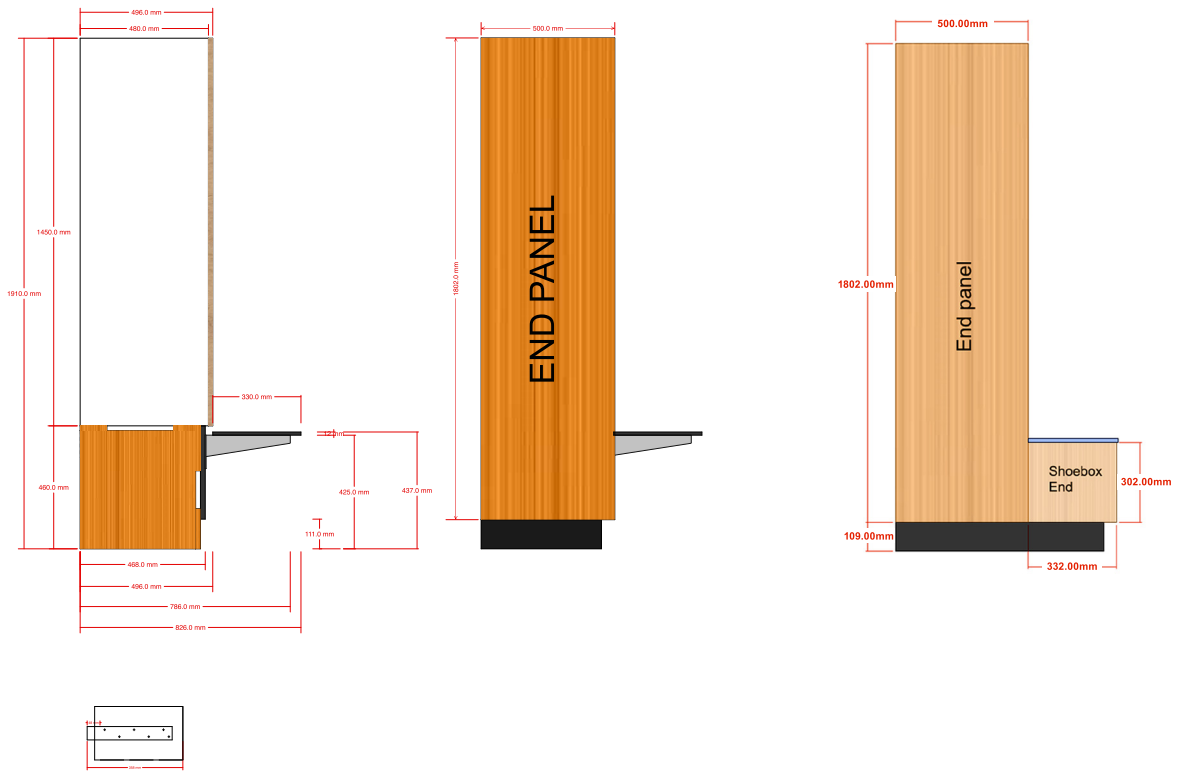
- ▶ 1450mm high x 500mm deep (standard)
(Option for 1600mm high)
- ▶ Compact Laminate Seating.
- ▶ 450mm high plinth black (standard)
- ▶ Coloured plinth available upon request
- ▶ Cantilevered seat 300mm w
- ▶ Open Shoe Storage under (optional)
- ▶ Hanging height 1370 mm
- ▶ Coat hanger provided
- ▶ Locker 300mm or 400mm w (standard)
- ▶ Custom dimensions available upon request
- ▶ Nominate Interloc Locking - request Interloc options
- ▶ Bulkheads available
- ▶ End Panels / Filler Panels to suit
- ▶ Interloc Numbering coloured labels or option for printed labels at extra cost
- ▶ Vents optional (vertical or horizontal)
- ▶ Sloping Tops optional
- ▶ Coloured Internals optional



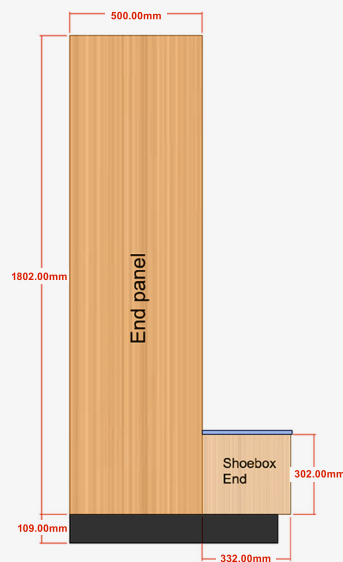
REVIT Portal
portal.interloc.com.au

Locker Builder
(separate to Revit)

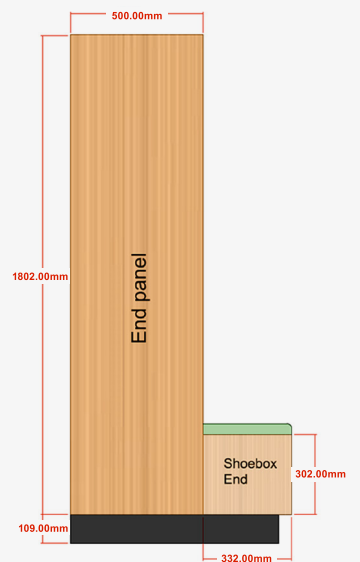
SEATING



G Style seat with 25mm postformed
high pressure laminate
Open shoe storage shown



G Style seat with compact laminate seating
Open shoe storage shown
13mm Laminex Classic Oak (standard)
Other colours available on request
but may incur additional cost



G Style seat with 40mm padded upholstery
Open shoe storage shown